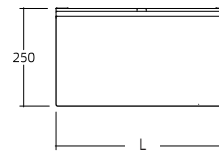
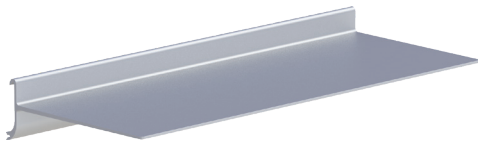


## TECHNICAL DATA SHEET

### 51-321/2/3-\*

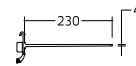
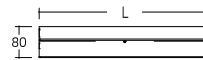
#### Shelf

for horizontal track



TOP

PERSPECTIVE



FRONT

SIDE

### PRODUCT DATA:

<b>Item code:</b>	51-321-70, 51-322-70, 51-323-70, 51-321-75, 51-322-75, 51-323-75
<b>Item Description:</b>	Shelf for horizontal track
<b>Length:</b>	30 cm, 45 cm, 60cm.
<b>Dimensions:</b>	NA
<b>Includes:</b>	NA
<b>Type:</b>	NA
<b>Flexibility:</b>	Sideways adjustable, Removable.
<b>Adjustability:</b>	NA
<b>Materials:</b>	Aluminium.
<b>Finish:</b>	Anodized, Similar stainless steel.
<b>Colour:</b>	NA
<b>Max loading weight:</b>	NA
<b>Max user weight:</b>	NA
<b>Country of Origin:</b>	Italy.

