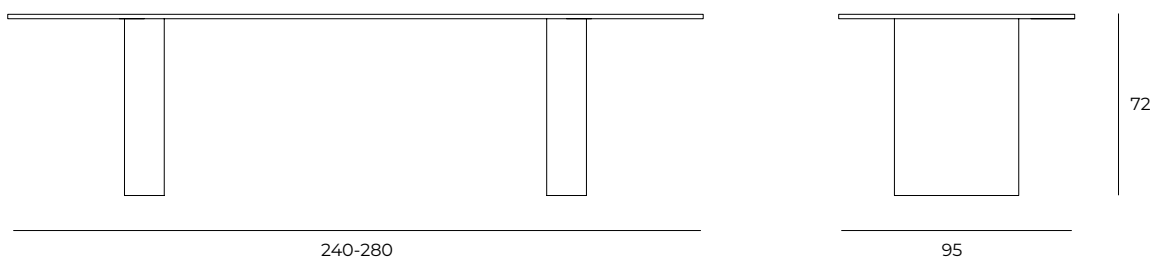


Basi in struttura metallica ricoperta in Purenit® rivestita con composto di malte e resine, spatolato a mano, adatto per esterno. Profilo in alluminio fissato alla struttura e verniciato. Il top, fissato alle basi tramite piastra in acciaio inox AISI316, è in sciolato di alluminio rinforzato e riempito con poliuretano espanso.

Bases in metal structure covered in Purenit® coated with a compound of mortars and resins, troweled by hand, suitable for outdoor use. Aluminum profile fixed to the structure and painted. The top, fixed to the bases by means of an AISI316 stainless steel plate, is in boxed aluminum reinforced and filled with polyurethane foam.

DIMENSIONI DIMENSIONS



FINITURE FINISHES

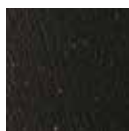
Pietre Stones



Sasso di Fiume
cod. G001



Pece
cod. G002



Pietra Lavica
cod. G003

Colori spazzolati Brushed colors



Bronzo
cod. S001



Antracite
cod. S002